

One-4-All™ International Transformers Printed Circuit Mount



International Standards at Lower Cost with Better Performance



Signal's 14A transformers are used in low power applications and provide the high isolation, creepage and clearance necessary to comply with international safety standards.

General Specifications

- Power - 2.5 VA to 56 VA
- Dielectric Strength - 4000 Vrms Hipot
- Dual Primaries - 115/230 V - 50/60 Hz
- Dual Secondaries - Series or parallel
- Insulation System - Class F, 155°C, UL 1446 (E66312)
- Flammability Rating - Bobbin and shroud material meet UL 94-V0

Agency Certifications

- UL recognized to UL 506 / UL 5085-2, File # E63829
- CSA certified to C22.2 No. 66.1, File # 221070
- VDE certified to VDE 0805 / EN 60950, File # 1446

CSA certified to C22.2 No. 66.3 / UL5085-3, File # 221070 - Class 2 Energy Limited



| Part Number | VA | Secondary RMS Rating | |
|--------------|------|----------------------|--------------|
| | Size | Series | Parallel |
| 14A-2.5R-10 | 2.5 | 10.0VCT @ 0.25A | 5.0V @ 0.50A |
| 14A-5.0R-10 | 5 | 10.0VCT @ 0.50A | 5.0V @ 1.00A |
| 14A-10R-10 | 10 | 10.0VCT @ 1.00A | 5.0V @ 2.00A |
| 14A-2.5R-12# | 2.5 | 12.6VCT @ 0.20A | 6.3V @ 0.40A |
| 14A-5.0R-12# | 5 | 12.6VCT @ 0.40A | 6.3V @ 0.80A |
| 14A-10R-12# | 10 | 12.6VCT @ 0.80A | 6.3V @ 1.60A |
| 14A-2.5R-16# | 2.5 | 16.0VCT @ 0.15A | 8.0V @ 0.30A |
| 14A-5.0R-16# | 5 | 16.0VCT @ 0.31A | 8.0V @ 0.62A |
| 14A-10R-16# | 10 | 16.0VCT @ 0.62A | 8.0V @ 1.25A |
| 14A-2.5R-20# | 2.5 | 20.0VCT @ 0.12A | 10V @ 0.24A |
| 14A-5.0R-20# | 5 | 20.0VCT @ 0.25A | 10V @ 0.50A |
| 14A-10R-20# | 10 | 20.0VCT @ 0.50A | 10V @ 1.00A |
| 14A-2.5R-24# | 2.5 | 24.0VCT @ 0.10A | 12V @ 0.20A |
| 14A-5.0R-24# | 5 | 24.0VCT @ 0.21A | 12V @ 0.42A |
| 14A-10R-24# | 10 | 24.0VCT @ 0.42A | 12V @ 0.84A |
| 14A-2.5R-28 | 2.5 | 28.0VCT @ 0.09A | 14V @ 0.18A |
| 14A-5.0R-28 | 5 | 28.0VCT @ 0.18A | 14V @ 0.36A |
| 14A-10R-28 | 10 | 28.0VCT @ 0.36A | 14V @ 0.72A |
| 14A-2.5R-36 | 2.5 | 36.0VCT @ 0.07A | 18V @ 0.14A |
| 14A-5.0R-36 | 5 | 36.0VCT @ 0.14A | 18V @ 0.28A |
| 14A-10R-36 | 10 | 36.0VCT @ 0.28A | 18V @ 0.56A |

| Part Number | VA | Secondary RMS Rating | |
|-------------|------|----------------------|--------------|
| | Size | Series | Parallel |
| 14A-20-10 | 20 | 10.0VCT @ 2.0A | 5.0V @ 4.0A |
| 14A-30-10 | 30 | 10.0VCT @ 3.0A | 5.0V @ 6.0A |
| 14A-56-10 | 56 | 10.0VCT @ 5.6A | 5.0V @ 11.2A |
| 14A-20-12# | 20 | 12.6VCT @ 1.6A | 6.3V @ 3.2A |
| 14A-30-12# | 30 | 12.6VCT @ 2.4A | 6.3V @ 4.8A |
| 14A-56-12 | 56 | 12.6VCT @ 4.4A | 6.3V @ 8.8A |
| 14A-20-16# | 20 | 16.0VCT @ 1.25A | 8.0V @ 2.5A |
| 14A-30-16# | 30 | 16.0VCT @ 1.9A | 8.0V @ 3.8A |
| 14A-56-16 | 56 | 16.0VCT @ 3.5A | 8.0V @ 7.0A |
| 14A-20-20# | 20 | 20.0VCT @ 1.0A | 10V @ 2.0A |
| 14A-30-20# | 30 | 20.0VCT @ 1.5A | 10V @ 3.0A |
| 14A-56-20 | 56 | 20.0VCT @ 2.8A | 10V @ 5.6A |
| 14A-20-24# | 20 | 24.0VCT @ 0.83A | 12V @ 1.66A |
| 14A-30-24# | 30 | 24.0VCT @ 1.25A | 12V @ 2.50A |
| 14A-56-24 | 56 | 24.0VCT @ 2.33 | 12V @ 4.66A |
| 14A-20-28 | 20 | 28.0VCT @ 0.72A | 14V @ 1.44A |
| 14A-30-28 | 30 | 28.0VCT @ 1.06A | 14V @ 2.12A |
| 14A-56-28 | 56 | 28.0VCT @ 2.0A | 14V @ 4.0A |
| 14A-20-36 | 20 | 36.0VCT @ 0.56A | 18V @ 1.12A |
| 14A-30-36 | 30 | 36.0VCT @ 0.82A | 18V @ 1.64A |
| 14A-56-36 | 56 | 36.0VCT @ 1.56A | 18V @ 3.12A |

Custom versions available upon request.

©2015 Signal Transformer Inc. Specifications subject to change without notice. 07.15

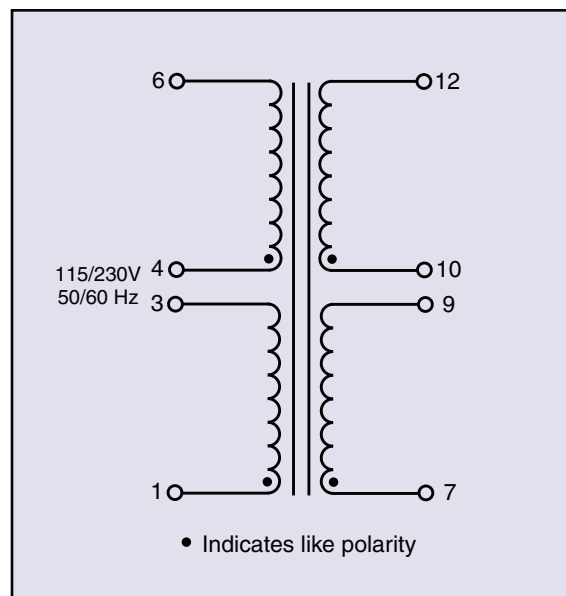
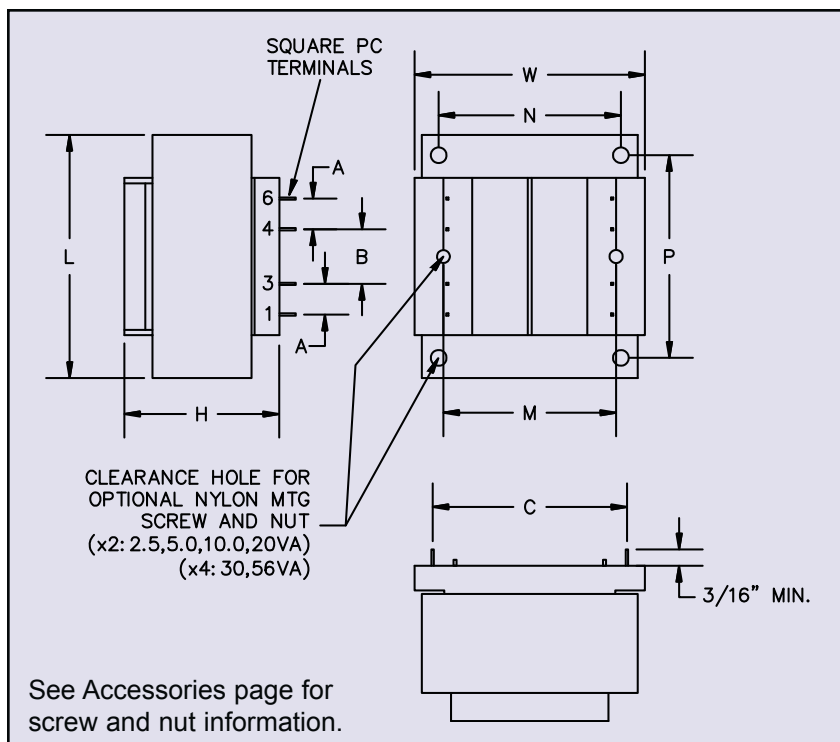


www.signaltransformer.com

500 Bayview Avenue, Inwood, NY 11096
Toll Free 866-239-5777 • Tel 516-239-5777 • Fax 516-239-7208
sales@signaltransformer.com • techhelp@signaltransformer.com

One-4-All™ International Transformers Printed Circuit Mount

International Standards at Lower Cost with Better Performance



| VA | Mechanical Dimensions | | | | | | Sq. Pin Dimensions | Mounting Dimensions | | | Mounting Screw | | Weight |
|------|-----------------------|----------------|----------------|----------------|-----------------|----------------|--------------------|---------------------|----------------|----------------|----------------|-----|-----------------|
| | L | W | H* | A | B | C | | M | N | P | Size | Qty | |
| Size | Inches (mm) | | | | | | | | | | Size | Qty | lbs (kg) |
| 2.5 | 1.62 (41.3) | 1.43 (36.5) | 1.12 (28.6) | 0.20 (5.08) | 0.25 (6.35) | 1.00 (25.4) | 0.025 (0.64) | 1.06 (26.9) | - | - | #4 | 2 | 0.25 (0.113) |
| 5 | 1.62 (41.3) | 1.43 (36.5) | 1.37 (34.9) | 0.20 (5.08) | 0.40 (10.16) | 1.00 (25.4) | 0.025 (0.64) | 1.06 (26.9) | - | - | #4 | 2 | 0.37 (0.168) |
| 10 | 1.87 (47.6) | 1.56 (39.7) | 1.37 (34.9) | 0.20 (5.08) | 0.40 (10.16) | 1.14 (29.0) | 0.036 (0.91) | 1.25 (31.7) | - | - | #4 | 2 | 0.53 (0.240) |
| 20 | 2.25 (57.2) | 1.87 (47.6) | 1.62 (41.3) | 0.40 (10.2) | 0.40 (10.2) | 1.46 (37.1) | 0.036 (0.91) | 1.50 (38.1) | - | - | #4 | 2 | 0.90 (0.41) |
| 30 | 2.62 (66.7) | 2.18 (55.5) | 1.56 (39.7) | 0.55 (13.9) | 0.27 (7.0) | 1.68 (42.7) | 0.045 (1.14) | - | 1.75 (44.4) | 2.18 (55.5) | #6 | 4 | 1.15 (0.52) |
| 56 | 3.00 (76.2) | 2.50 (63.5) | 1.83 (46.5) | 0.60 (15.2) | 0.30 (7.6) | 1.90 (48.3) | 0.045 (1.14) | - | 2.00 (50.8) | 2.50 (63.5) | #6 | 4 | 1.70 (0.77) |

*Note: Dimension H represents the total distance from the seating plane to the uppermost surface, stand offs and/or risers inclusive.

Custom versions available upon request.

©2015 Signal Transformer Inc. Specifications subject to change without notice. 07.15



www.signaltransformer.com

500 Bayview Avenue, Inwood, NY 11096
Toll Free 866-239-5777 • Tel 516-239-5777 • Fax 516-239-7208
sales@signaltransformer.com • techhelp@signaltransformer.com

Mouser Electronics

Authorized Distributor

Click to View Pricing, Inventory, Delivery & Lifecycle Information:

Bel:

[14A-56-28](#) [14A-10R-24](#) [14A-56-24](#) [14A-5.0R-16](#) [14A-5.0R-24](#) [14A-10R-10](#) [14A-10R-16](#) [14A-5.0R-20](#) [14A-2.5R-10](#) [14A-20-36](#) [14A-30-10](#) [14A-5.0R-10](#) [14A-30-20](#) [14A-56-10](#) [14A-2.5R-36](#) [14A-30-16](#) [14A-30-12](#) [14A-20-10](#) [14A-30-28](#) [14A-20-28](#) [14A-2.5R-28](#) [14A-20-12](#) [14A-56-36](#) [14A-20-16](#) [14A-10R-36](#) [14A-10R-20](#) [14A-30-36](#) [14A-5.0R-28](#) [14A-20-24](#) [14A-10R-12](#) [14A-2.5R-16](#) [14A-10R-28](#) [14A-5.0R-36](#) [14A-2.5R-24](#) [14A-56-16](#) [14A-2.5R-20](#) [14A-20-20](#) [14A-30-24](#) [14A-56-20](#) [14A-5.0R-12](#) [14A-2.5R-12](#) [14A-56-12](#)